

Civilian Conservation Corps





POST CARD - BATTLE MOUNTAIN, NEVADA -
1936



FORMAN OF SPIKE CAMP - 1936



*NEVADA HOTEL AT BATTLE MOUNTAIN,
NEVADA - 1936*



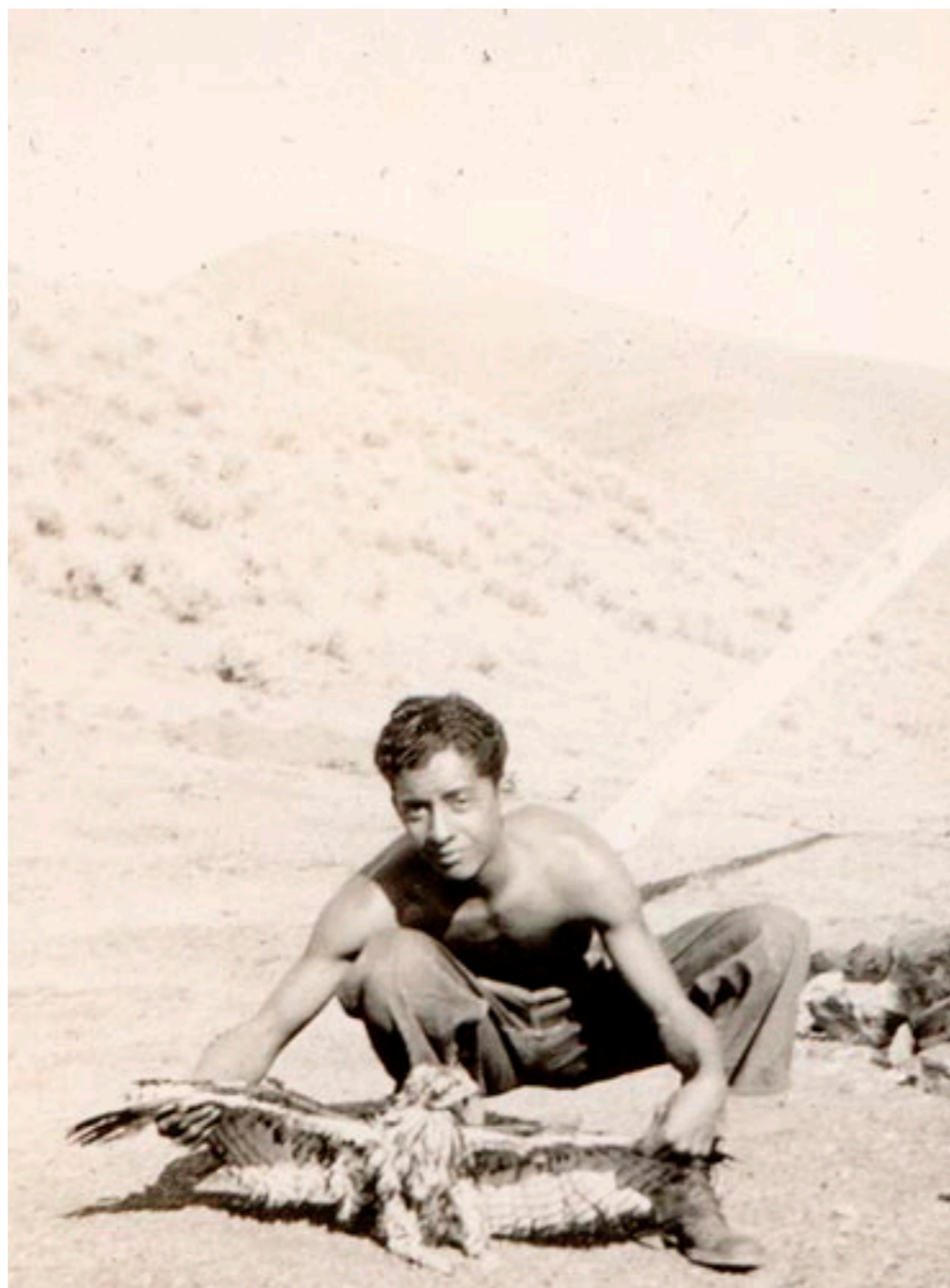
SPIKE CAMP - 1936



*SPIKE CAMP CREW - CLEMENT
RESTO, WHITE T SHIRT BACK
ROW -1936*

*CLEMENT RESTO WITH
BABY HAWK - CAMP SPIKE -
1936*





*ORIGINAL PHOTO OF
CLEMENT RESTO AND
BABY HAWK - 1936*



BABY HAWK



*CLEMENT RESTO - SPIKE CAMP IN
BACKGROUND - 1936*



*CREW GETTING ON TRUCKS TO GO TO
WORK - CAMP SPIKE - 1936*



CLEMENT RESTO - 1936



*CREW COMING OUT OF
BARRACK #4 - CAMP SPIKE -
1936*



*CLEMENT RESTO, RIGHT,
WITH PAL IN FRONT OF
BARRACK, CAMP SPIKE*



*CLEMENT RESTO PAINTING SIGN -
1936*



SPIKE CAMP BUNKHOUSE - 1936



*SPIKE CAMP BUNKHOUSE -
1936*



*HILL TOP AT CAMP SPIKE -
CLEMENT RESTO ON
RIGHT WITH PAL - 1936*



*TIRED CAMP SPIKE CREW
- CLEMENT RESTO, FRONT
LEFT - 1936*



CAMP SPIKE - MAIN CAMP - NEVADA - 1936



CAMP SPIKE - 1936



ORANIA CAMP - NEVADA - 1936



ARKANSAS RIVER



*WILD MUSTANGS AT WIND
MILL - 1936*



*WILD MUSTANG DRINKING
FROM CREEK AT CAMP
SPIKE - 1936*



*HERD OF WILD
MUSTANGS - NEVADA -
1936*



BATTLE MOUNTAIN, NEVADA - 1936



*CLEMENT RESTO AND
FOREMAN'S CAR*



WINTER AT CAMP SPIKE - 1936



ROUND UP



RETREAT AT CAMP SPIKE



WPA MEN AT WORK



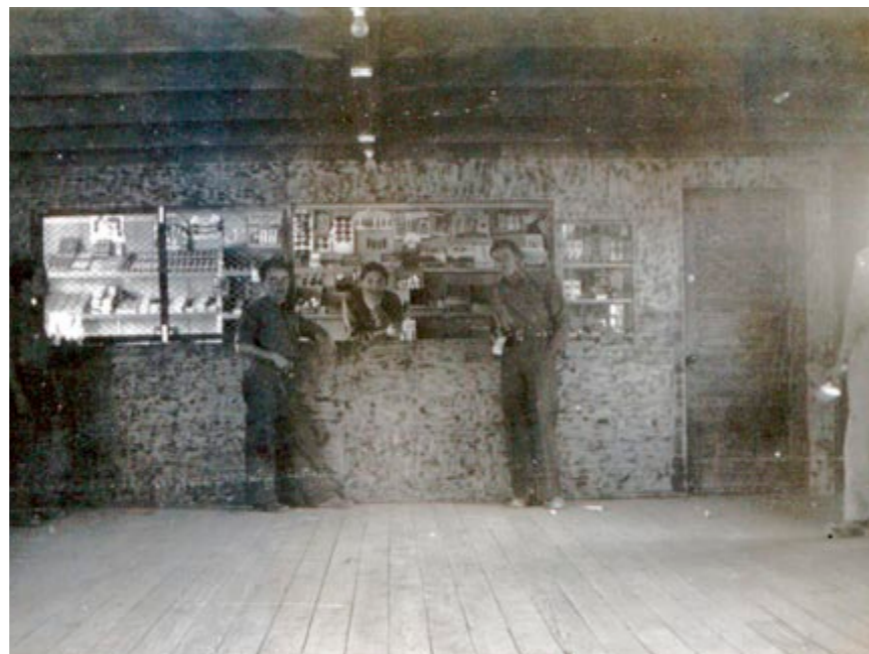
*CLEMENT RESTO AT CAMP SPIKE -
1936*



HILLS AROUND CAMP SPIKE - 1936



SMALL BRIDGE TO CAMP SPIKE - 1936



LOCATION UNKNOWN



*CREW ON TRUCK HEADED
FOR RENO, NEVADA -
CLEMENT 4TH L TO R*



VIEW FROM TRUCK ON WAY TO RENO - 1936



FLAT TIRE ON WAY TO RENO - 1936



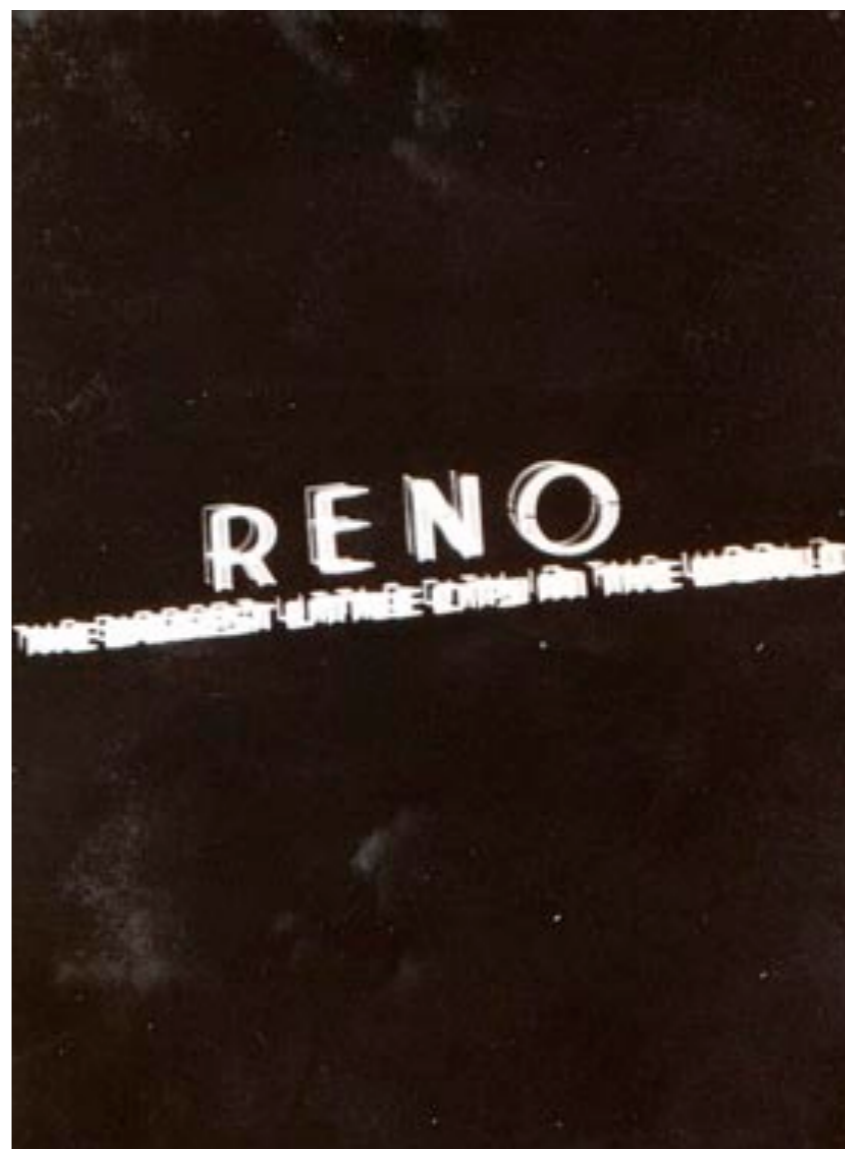
*CLEMENT RESTO IN THE
DESERT - 1936*



*CLEMENT RESTO STANDING
2ND LEFT TO RIGHT WITH
PALS - CAMP SPIKE*



*PHOTO OF CLEMENT RESTO
WITH PALS - 1936*



RENO, NEVADA AT NIGHT



LAKE AT RENO NEVADA - 1936



*BEGINING OF 4TH OF JULY PARADE -
RENO, NEVADA - 1936*



*LAKE AT RENO PARK, RENO, NEVADA -
1936*



*RENO POST OFFICE, RENO, NEVADA -
1936*



*COWBOY AT RENO, NEVADA -
1936*



*MAYOR OF RENO & GOVERNOR
OF NEVADA - 4TH JULY 1936*



POST CARD - NATIVE AMERICANS



*NATIVE AMERICANS IN 4TH JULY
PARADE - RENO, NEVADA - 1936*



*4TH JULY PARADE - RENO,
NEVADA - 1936*



*RODEO AT RENO, NEVADA -
1936*



*CLEMENT RESTO - RENO,
NEVADA - 1936*



*CLEMENT RESTO 3RD
LEFT TO RIGHT WITH
PALS - RENO, NEVADA 1936*



*CLEMENT RESTO AT
WENNEMUCCA, NEVADA -
1936*



*CLEMENT RESTO - LOCATION
UNKNOWN - 1936*



CAMP SPIKE - 1936



CAMP SPIKE - 1936



RENO PARK, RENO, NEVADA - 1936



*CLEMENT RESTO - FOREGROUND -
HELPING BUILD FENCE - 1936*



*ALL GIRL BAND - 4TH
JULY, 1936 RENO, NEVADA*



*HORSE RACE - RENO RODEO - RENO,
NEVADA 1936*



*STEER RIDERS - RENO RODEO -
RENO, NEVADA 1936*



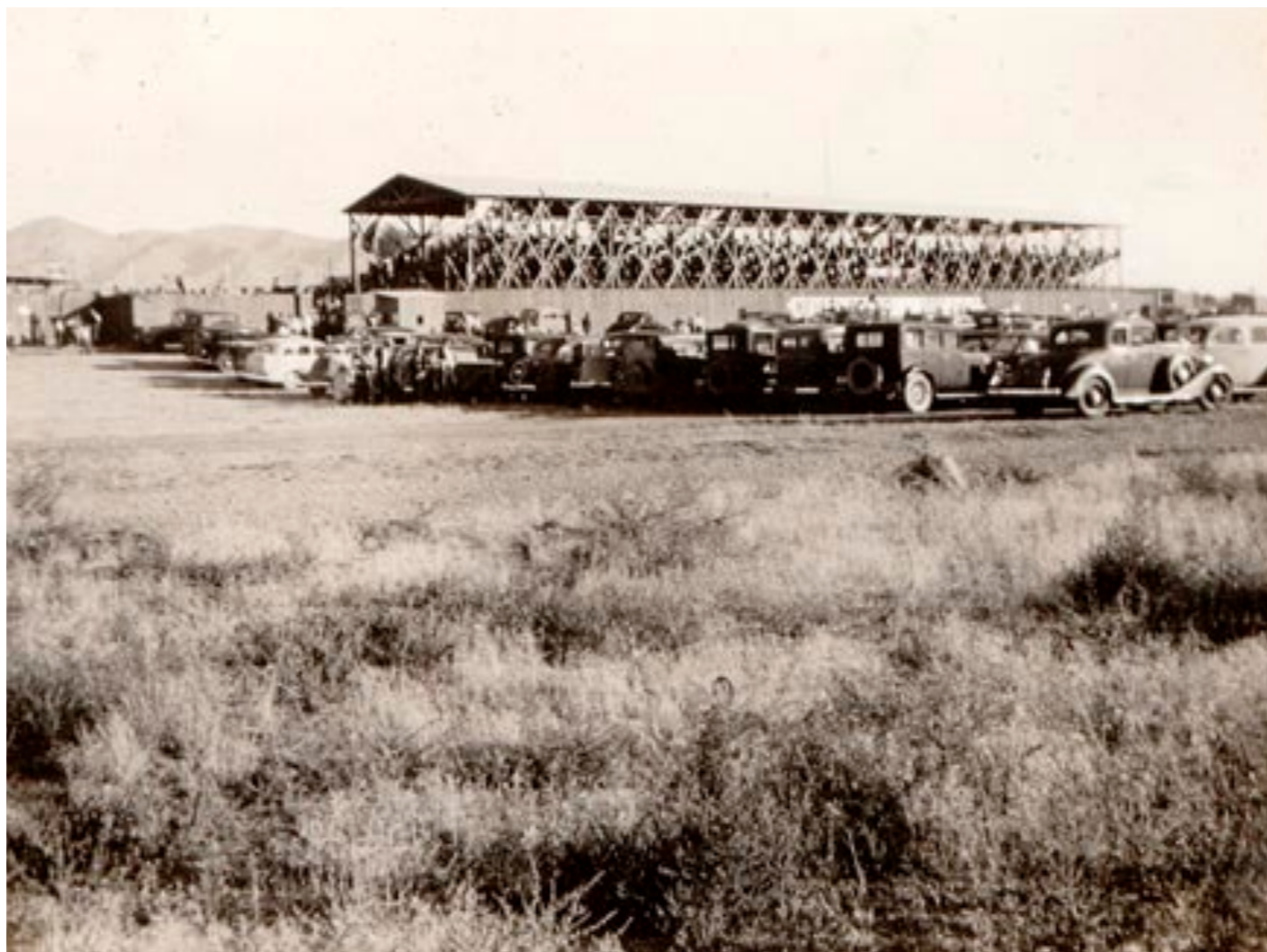
*BRONCO RIDERS - RENO
RODEO - RENO, NEVADA 1936*



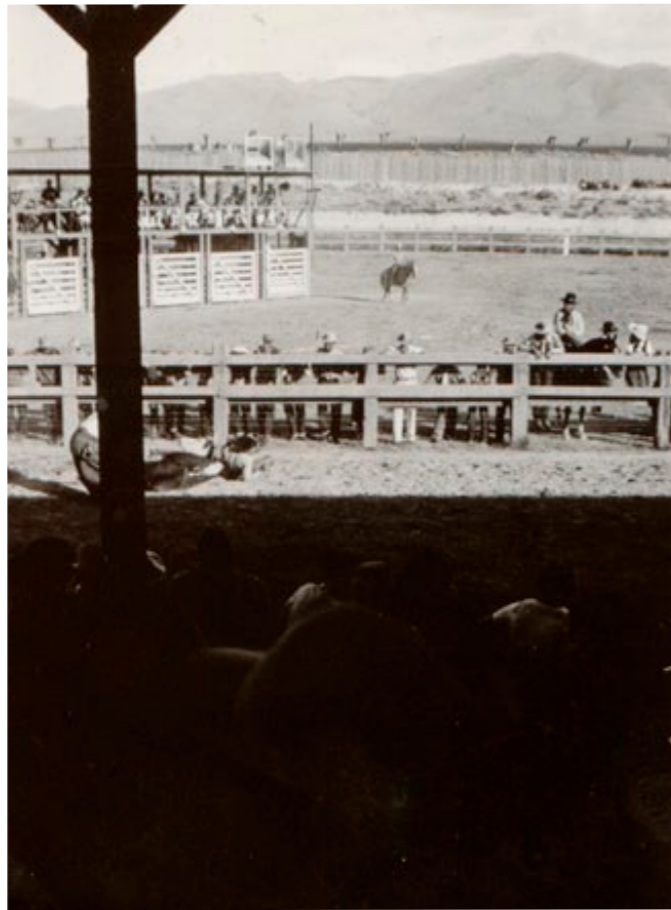
*AIRPLANE FLYING OVER
WINNEMUCCA, NEVADA -
1936*



*BARNSTORMERS - NEVADA -
1936*



RODEO STADIUM AT RENO, NEVADA - 1936



*STEER ROPING - RODEO AT RENO,
NEVADA - 1936*



*START OF RODEO AT RENO, NEVADA -
1936*



*NATIVE AMERICANS RIDING AT RODEO
- RENO, NEVADA - 1936*



BRONCO RIDING

*CLEMENT RESTO READING
- CIRCA LATE 30'S EARLY
40'S*





*ON THE ROAD - EARLY 1940'S - LADY LOOKING
OUT WINDOW*



CLEMENT RESTO - EARLY 1940'S



TOBY LATE 1930'S



ON THE ROAD, EARLY 1940'S



TOBY - LATE 1930'S



*CLEMENT RESTO & TOBY - CIRCA
LATE 1930'S*